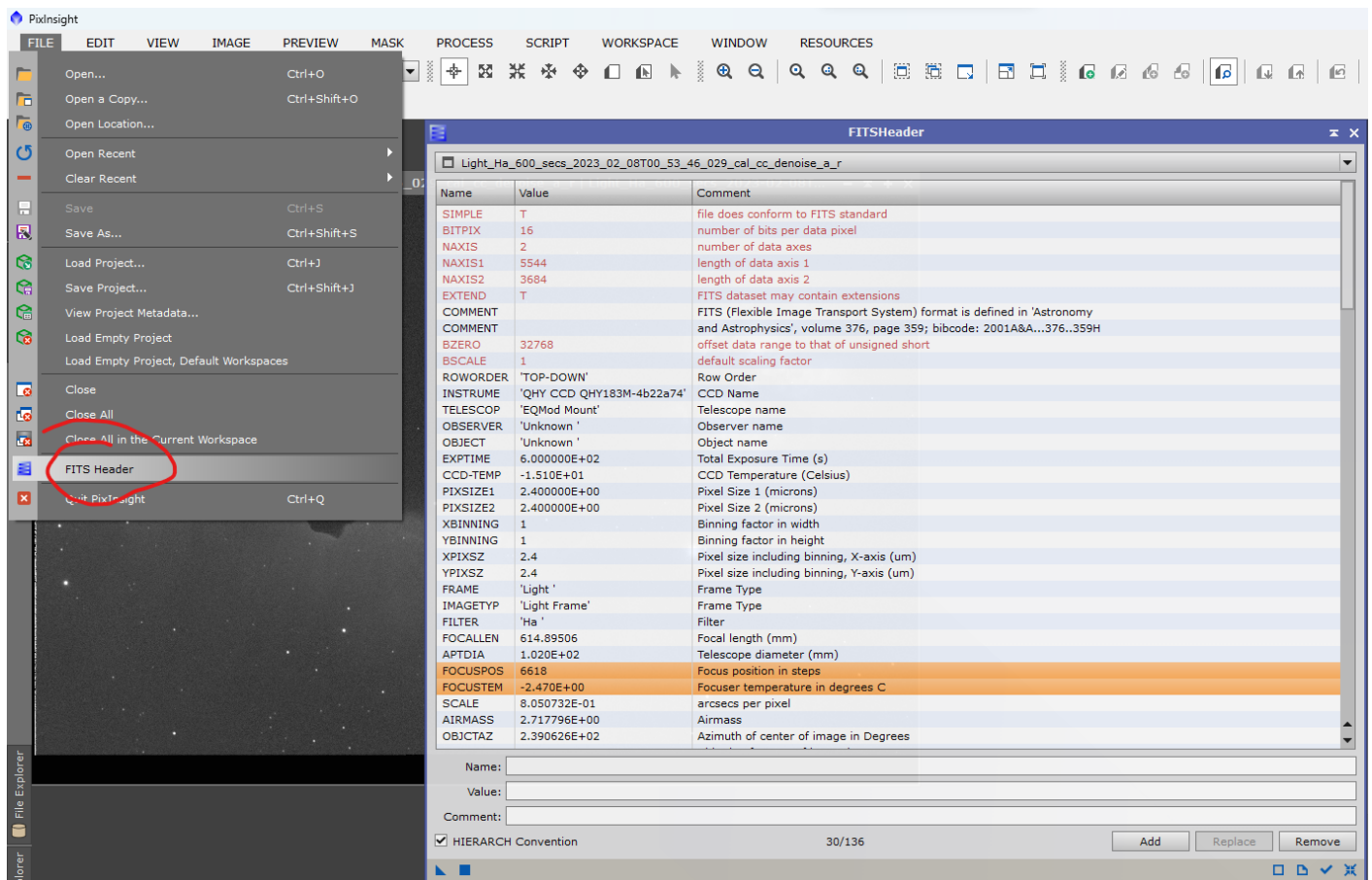


1- Vérification du Fits Header

On ouvre une brute, on lance le Fits Headers, et on recherche la position du focuser et la température de la sonde.

Ici, FOCUSPOS et FOCUSTEMP.



Revision #1

Created 26 February 2023 14:49:16 by fredouchka

Updated 26 February 2023 14:50:51 by fredouchka